

Epochal innovation of relaxation a pain

# PULSE TRON SS-2000 USER MANUAL

AD-AM is the company that is doing its best  
to make this world healthier

This product has been manufactured  
and passed by a completed standard  
of product quality control.  
In case of break-downs, contact one  
of our agents or A/S team of our  
head office, together with its warranty.

Always keep its warranty, since any  
replacement or repairing will not  
be rendered without a warranty.



## Introduction

Thank you so much for your purchasing  
Pulse Tran SS-2000.

We wish you a very happy, energetic and healthy  
life using Pulse Tran 2000, with all our hearts.

Use the product properly, upon reading instruction  
manuals before using it.

Always keep the manuals in the right place that can  
be easily located, for further references.

We promise to do our best to make this  
world healthier.



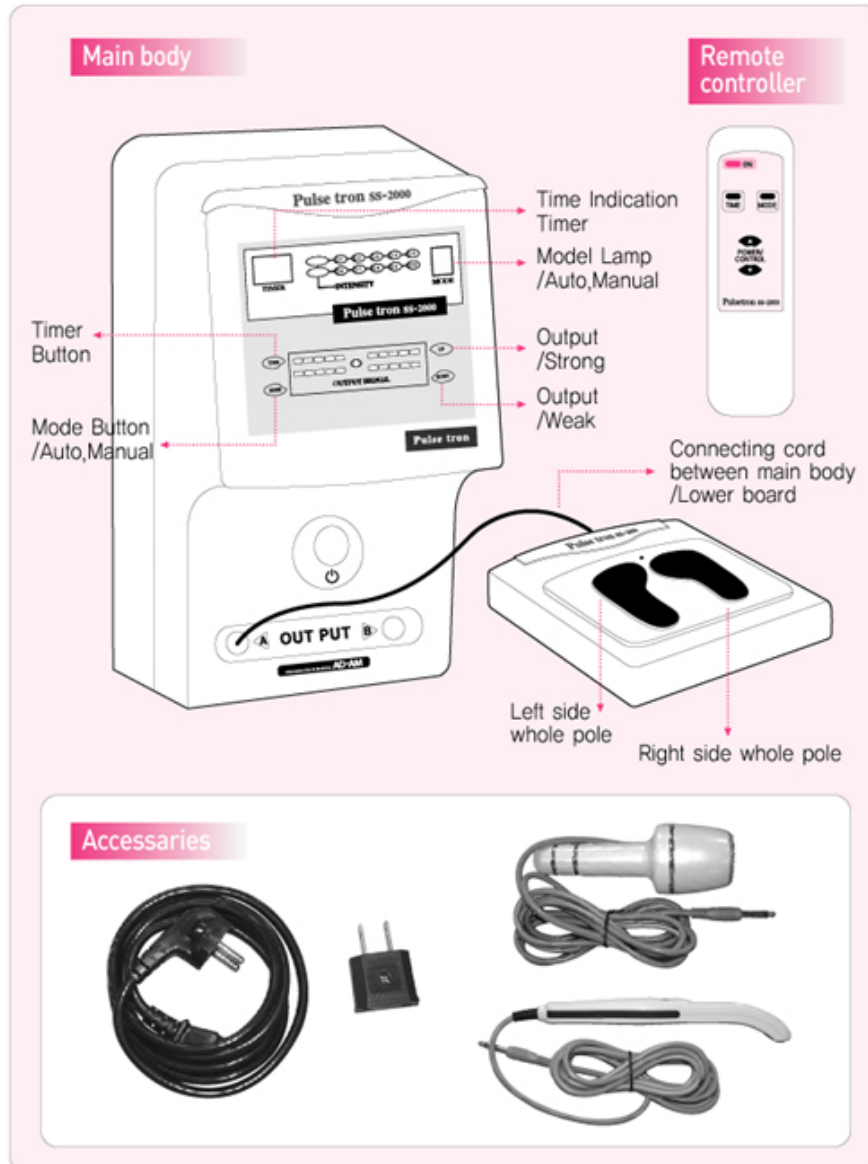
## Contents

# PULSE TRON SS-2000

Always keep its warranty, since any replacement or  
repairing will not be rendered without a warranty.

Name of each part & Accessories .....	04
Precautions before using .....	05
How to use pulse board .....	06
How to use pulse pan .....	07
Precautions for use .....	08
Effective storing & handling for the product .....	09
Features and Characteristics .....	10
Guarantee & A/S service .....	11

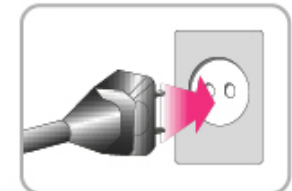
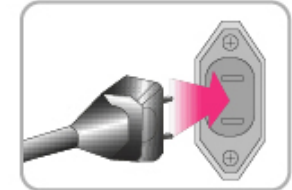
## Name of each part & Accessories



## Precautions before using the product

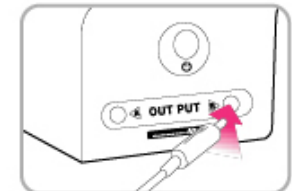
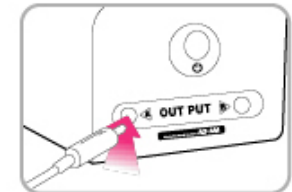
### Install Pulse Tron in a stable spot

- 1 Connect power cord to main power input of Control box on the back of the product.  
\* Caution : Check if main cord connection is normal.
- 2 Connect power cord input terminal to power of 220V.  
\* Caution : Don't connect power with wet hands.  
This product is good for 220V only.



### Install Pulse board in a proper place to be used such as chairs and sofas. (front side of them)

- 1 Connect plug of Pulse board properly into a output exit of main body.
- 2 Connect plug of Pulse pan properly into a output exit of main body.



Operator should put his feet on pulse board of this product.



## Name of each part & Accessories

- 1 Push power button on the upper part of this product's main body.  
Red light on power lamp and the product's self-diagnosis begins.
- 2 Operation starts with standard setting.  
Power level is 1 for basic time of 30 minutes and type is set for automatic mode.
- 3 Set time needed for use by remote controller.  
It can be controlled up to 60 minutes, with the range of each 10 minutes.
- 4 Set output strength needed for use by remote controller.  
It can be controlled up to level 10 from 1.
- 5 Operation mode is automaticall  
To change for manual mode, set by set.  
remote controller.
- 6 Upon completion of using,  
alarm sounds and display  
screen turns off.



Pulse strength is limited - Too strong stimulation is not recommended, and its since it might cause muscle pains unexpected movements.

## Precautions before using the product

- 1 Push power button on the upper part of this product's main body.  
Red light on power lamp and the product's self-diagnosis begins.
- 2 Change operation mode by pushing automatic button on  
remote controller.  
Green light turns off on the upper part of main body's right side.
- 3 Set output strength needed for use by remote controller.  
It can be controlled up to level 10 from 1.
- 4 It is to be used for finger-pressure  
points and acupuncture spots.  
Use it for each spot for less than 3 minutes.
- 5 Upon completion of using,  
alarm sounds and display  
screen turns off.



Don't use it towards face, head or heart.  
Don't use it any wounded part of body.



## Precautions for use

Use the product properly upon reading 「Precautions for Use」 before using the product.

- This product cannot be used at the same time with the following medical / electronic equipment.

- ① Medical instrument for inside-the body installation like face makers.
- ② Medical instrument for life-maintaining facilities like artificial hearts.
- ③ Medical instrument for long-time installation like an electrocardiograph.
- ④ Any other person who uses similar medical instrument like the above.



- Anyone who belongs to the following examples is recommended consult a doctor before using this product.

- ① A person who has a heat disease.
- ② A person who has an acute disease.
- ③ A person who has a malignant tumor.
- ④ A person who has a fever.
- ⑤ A person who has any kind of mental problems.
- ⑥ Pregnant women.
- ⑦ A person who has a skin trouble around the treating area.
- ⑧ And any other improper person specified by doctors' judgment.



**WARNING**

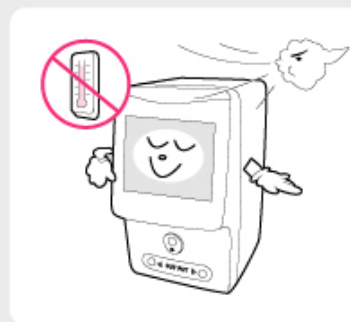
Don't use this product near a heart, head, face, or a troubled skin. Never disjoint, fix or remodel this product. It might be a cause of troubles and break-downs.

## Effective storing & handling for the product

- Always plug it out after use.
- Take out inserted plug.



- Keep it where it has no direct sunlights and has good air ventilation.



- Be careful not to impact it too strongly or drop it. It would be a cause of break-downs and shortened durability.



- Use standard voltage. (220V only)
- Disconnect power immediately by pushing power button on main body in case of power outage.



## Features & Characteristics

### Features

- ① Simultaneous use by 2 persons.
- ② Remote controlling functions added.
- ③ Computer programmed frequency stored in.
- ④ Displayed program proceeding.
- ⑤ LED indication of intensity/modulation changes.
- ⑥ Effectiveness doubled by accepting sectional pulse pan.
- ⑦ One-touch operational functions added.
- ⑧ Self-check functions built-in.

### Characteristics

Name of Product	Personal Low Frequency Stimulator (SS-2000)
Manufacturer Certificate No.	Korea Food & Drug Administration No.713
Product Certificate No.	Korea Food & Drug Administration 00-141
Manufacture No. / Date	Remarks In Addition
Weight	11.95kg
A Purpose Application	Relieve of Muscular Pain
Method & Attention	Reference Manual
Electric Power Supply	220V / 60Hz
Power Consumption	10W
An Impulse Current	2 Degree BF Type

## Guarantee & A/S service

This product has been manufactured and passed by a completed standard of product quality control.

In case of break-downs, contact one of our agents or A/S team of our head office, together with its warranty.

### Note

- Always keep its warranty, since any replacement or repairing will not be rendered without a warranty.
- Write the date of purchase down in warranty at the time of product purchase.
- Compensation is not guaranteed for a product which is over its quality warranty period or for a product which is damaged by customer's carelessness. These products will be repaired and charged, if repairing is available.
- Contact one of our sales offices or A/S center of our head office for other inquiries. Detailed explanation will be given to you.

### Customer handling & A/S center :

Product warranty			
Product name	Pulse Tron	Model	
Warranty period	Main body 2years, Remote controller 1year	Manufacturing No	
Date of purchase		Sales Agent	
Name		Tel	
Address			

\* Get a confirmation in a format of "Purchase" at the time of product purchase, to get a free-of-charge repairing.